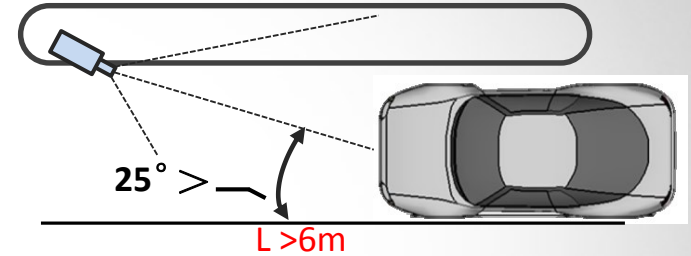
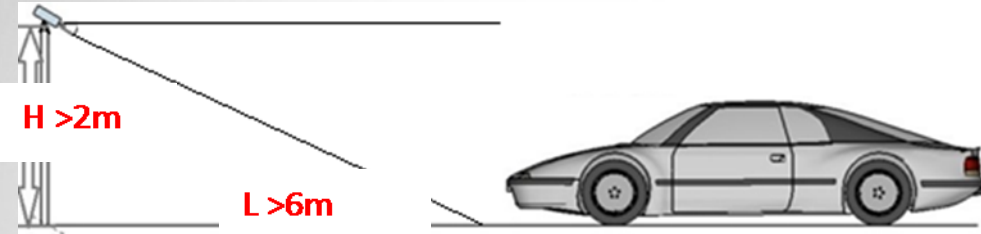


Bulletin for ANPR Camera V1.1

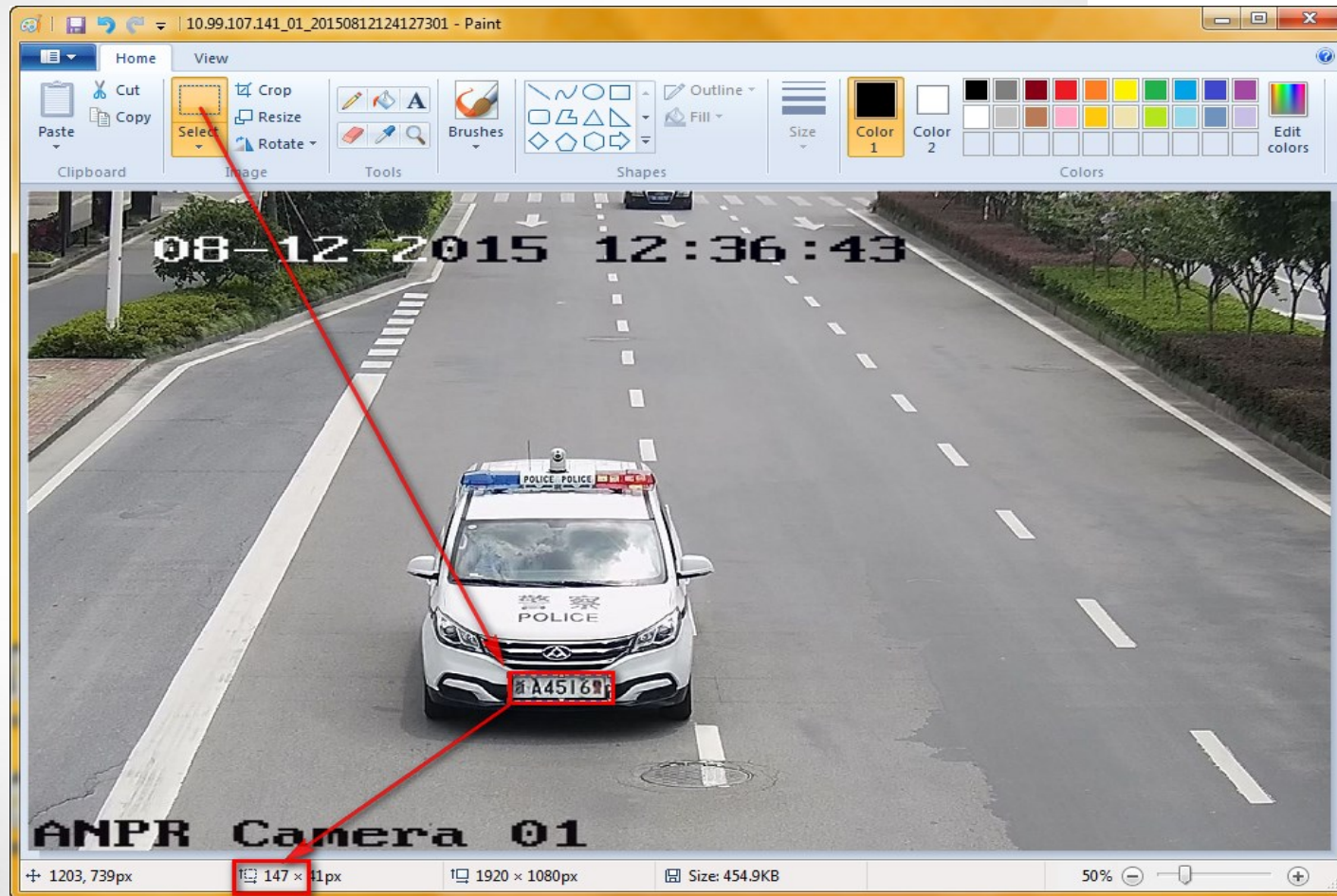
-Hikvision Oceania

- Installation Conditions
- Camera Configuration

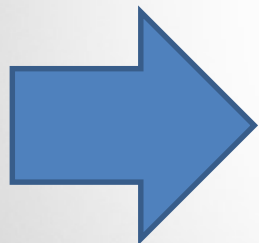
Installation Conditions



- Mounting height of ANPR camera should be between **2-6 meters** .
- Distance between ANPR camera and detection area should be between 7-30 meters. Different detection distance requires different lens.
 - 8-32mm: 7-26 meters**
 - 11-40mm: 10-32 meters**
- Number plate need to be horizontal in the detection area.
- Camera should focus on number plate.
- Horizontal pixels of the plate number in image should be between **100-200 pixels**.
- **SD card** is recommended to ensure on-board number plate information storage.

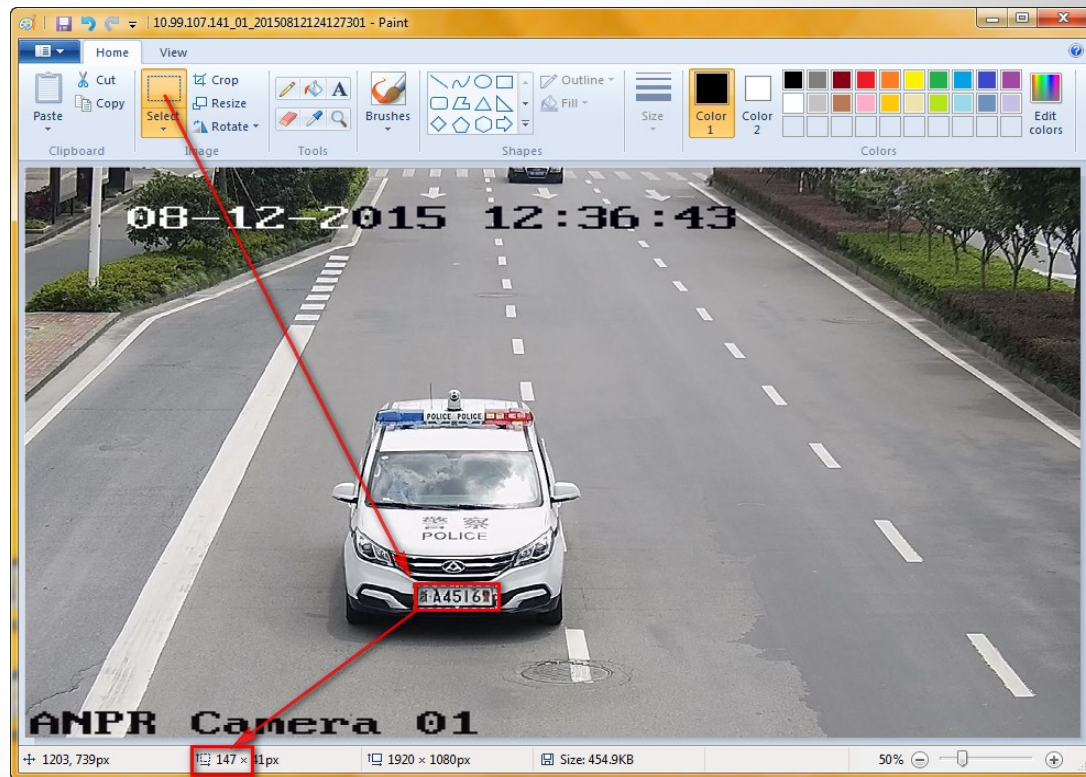


Qualified sample



Camera Configuration

- Zoom the camera in to a suitable focal range
- Capture a picture in the local web, and use PC tool 'Paint' to open the image
- Click 'Select' button and draw a square in the number plate, resolution of number plate will be shown automatically. **Make sure the horizontal resolution is between 100-200**
- Repeat above steps until the image meet the requirements




Camera Configuration

- Go to local web of the camera, **enable** 'vehicle detection' function
- Draw a detection area in the image , like the image on the right
- If the pixel of the plate is larger than 130, set "big" for the plate mode . Otherwise set the "small" for the plate mode.

Area Settings
Arming Schedule
Linkage Method

02-01-2016 Mon 19:56:24
LPR Cam



Total Number of Lanes

Plate Mode

1

Small

Camera Configuration

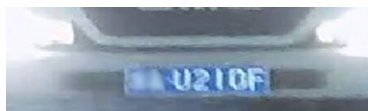
1/25s



1/50s ~ 1/100s



1/100s ~ 1/150s



1/150s ~ 1/500s:



Vehicle speed(kmph)	Exposure time(s)
5	1/100
40	1/500
100	1/1000
200	1/2000

Lower the exposure time to **1/150s ~ 1/2000s** according to vehicle speed.

^ Exposure Settings

Iris Mode

Manual

Exposure Time

1/25

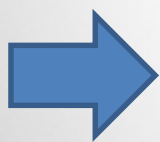
Gain

100

Camera Configuration

- Change the day/night switch to 'scheduled-switch', set the start time and end time for the day time and night time
- Exposure Settings, lower the 'gain' to 20-50, high gain may cause over exposure issue at night.
- For 40xx ANPR camera, go to the external device to set the schedule for the LED light

Qualified sample



- **Keep WDR, BLC and smart IR off.**
- Set the 'gain', 'exposure time' and 'day/night switch time' repeatedly to get a qualified image